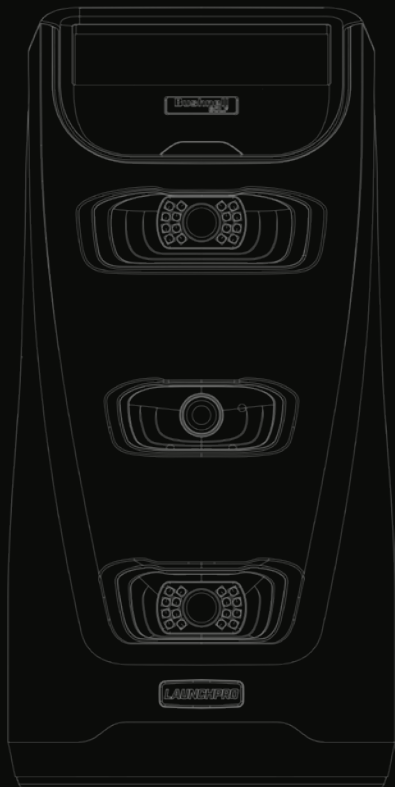


BUSHNELL GOLF



LAUNCH**PRO**

User Manual

LAUNCHPRO



Welcome to Launch Pro

ACCURACY ABOVE ALL

Your pursuit of longer drives, more accurate carries and lower scores requires knowing the critical data points of your swing. A personal launch monitor will give you these data points, however, not all launch monitors are created equal. With Launch Pro, you get the combination of Tour-level accuracy and true-to-life simulation to give you the most complete personal launch monitor available.

Thanks to the advanced photometric technology inside, the Launch Pro remains accurate and reliable both on the range and in your home simulator. Combine it with the FSX performance and gaming suite and enjoy hundreds of world-class courses, skill-building games, and global leagues and competitions.

This user manual will help you better understand the proper set-up, operation, and care of your Launch Pro.

Table of contents

Getting Started.....	5
Registration	11
Subscriptions.....	13
Ball Placement & Hitting.....	15
Quick Settings.....	19
Club Tracking	23
Target Alignment	27
Storage & Maintenance	31
Specifications & Support.....	33



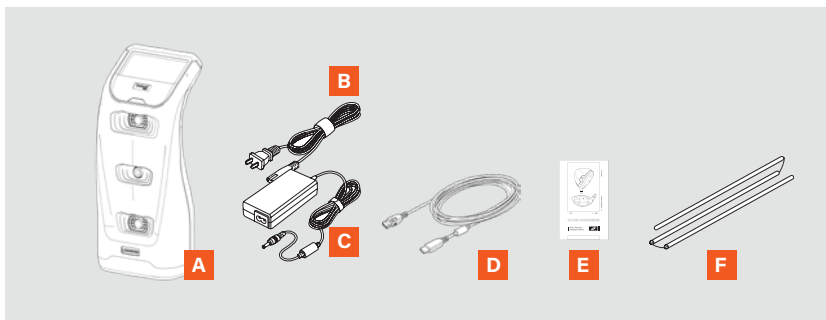


GETTING STARTED

Getting Started

WELCOME TO YOUR LAUNCH PRO

LAUNCH PRO USER MANUAL

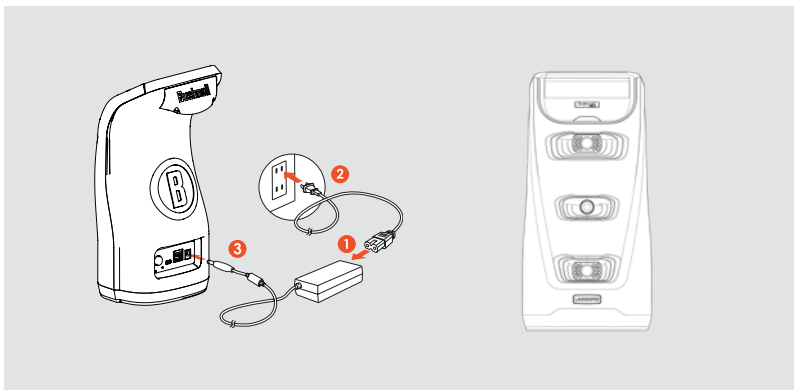


- A Launch Pro Launch Monitor
- B Power Cord
- C A/C Power Adapter
- D USB-C Cable
- E 28 Club Marker Pack
- F Alignment Stick





Plugging in the Launch Pro

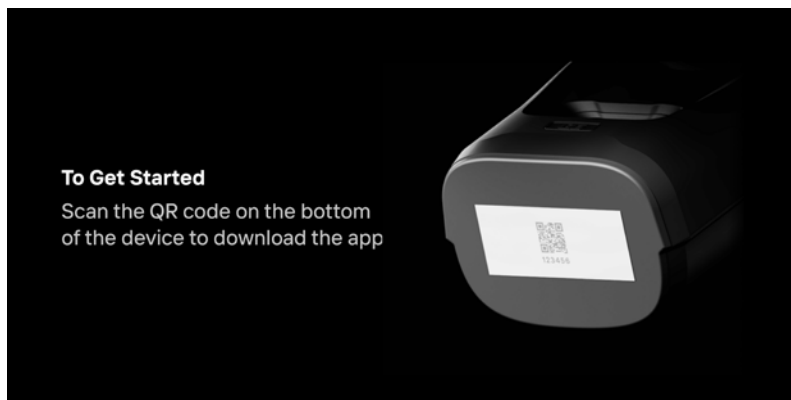


You can use your Launch Pro right out of the box, but it is recommended that you plug in your Launch Pro and allow the battery to fully charge before use.

To power on the Launch Pro, press and release the power button. You will see a flashing blue indicator light. To power off the Launch Pro, press and release the power button again.

Getting Started

Before powering on your Launch Pro, locate and scan the QR code on the bottom of the device. This will download the Foresight app, which you'll use to connect and register your unit. The app will guide you through onboarding, including an overview of available software subscription options.





Registration

REGISTER YOUR LAUNCH PRO

LAUNCH PRO USER MANUAL

Once connected to the internet, you will see a Registration QR Code on the touch display. Simply scan the code with your phone or tablet and follow the prompts to set up a login and register your device.

The Launch Pro requires online registration renewal every 45 days. If the registration of your device has expired, all data channels from the Launch Pro (USB, ethernet, Wi-Fi, and Bluetooth) will be blocked until registration renewal is completed. The Launch Pro will continue to work as a stand-alone device.

To find registration information, swipe down to access the QUICK SETTINGS screen and tap ABOUT, then REGISTRATION.



Subscriptions

YOUR GAME, YOUR CHOICE





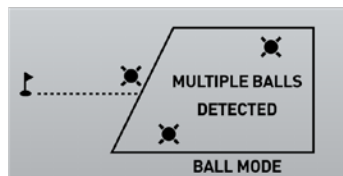
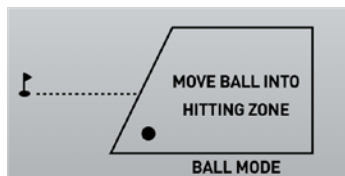
If you see the ADD A SUBSCRIPTION screen , scan the QR code with your phone or tablet and follow the prompts to set up your subscription.

Ball Placement & Hitting

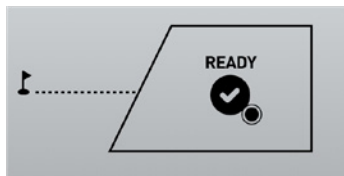
LET'S SEE WHAT YOUR LAUNCH PRO CAN DO!



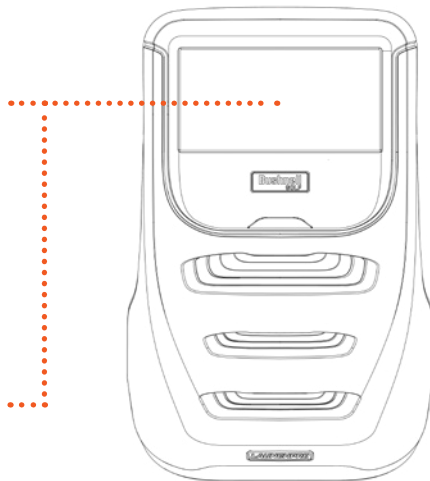
To use your Launch Pro, place upright approximately 2 feet away from the hitting area. If you are using a hitting mat, make sure the Launch Pro is raised to the same level as the hitting surface.



Place the ball on the ground in front of your Launch Pro. If the ball is outside of the hitting zone, you will see the MOVE BALL INTO HITTING ZONE screen. If there are multiple balls in the hitting zone, you will see the MULTIPLE BALLS DETECTED screen. Once the ball is in the hitting zone, the Launch Pro will display the READY screen and the blue LED indicator light will change from blinking to solid.



SPEED	LAUNCH	PULL
68.9 MPH	15.2°	1.3°L
CARRY	SIDE SPIN	BACK SPIN
99.5 YDS	421_R RPM	2680 RPM



After hitting the ball, the Launch Pro records your speed, launch angle, push/pull, spin, and carry. To access previous shot data, swipe down to access the QUICK SETTINGS screen, then go to SETTINGS, then SHOT SAVER.

Ball Data Explained

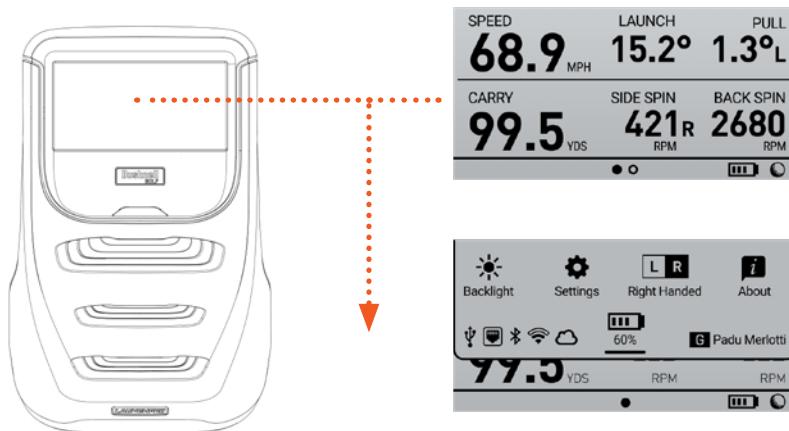
+ Speed	The measurement of velocity just after impact. Ball speed is the main component in generating distance.
+ Launch Angle	The initial vertical angle of ascent relative to the ground measured in degrees. The launch angle, combined with ball spin and speed, determines the ball carry and total distance.
+ Push/Pull	In right-handed mode, Push is when the horizontal direction of the ball is greater than or equal to zero. The ball moves "in to out", away from the hitter. Pull is the opposite; the ball moves "out to in", towards the hitter.
+ Carry	The total distance of flight.
+ Side Spin	The degree of sideways (horizontal) spin. A component of total spin that defines ball curvature or shot shape. The more sidespin, the greater the ball curvature.
+ Back Spin	The backward rotation of the ball. A component of total spin that defines ball lift and trajectory. The more backspin, the greater the ball height.



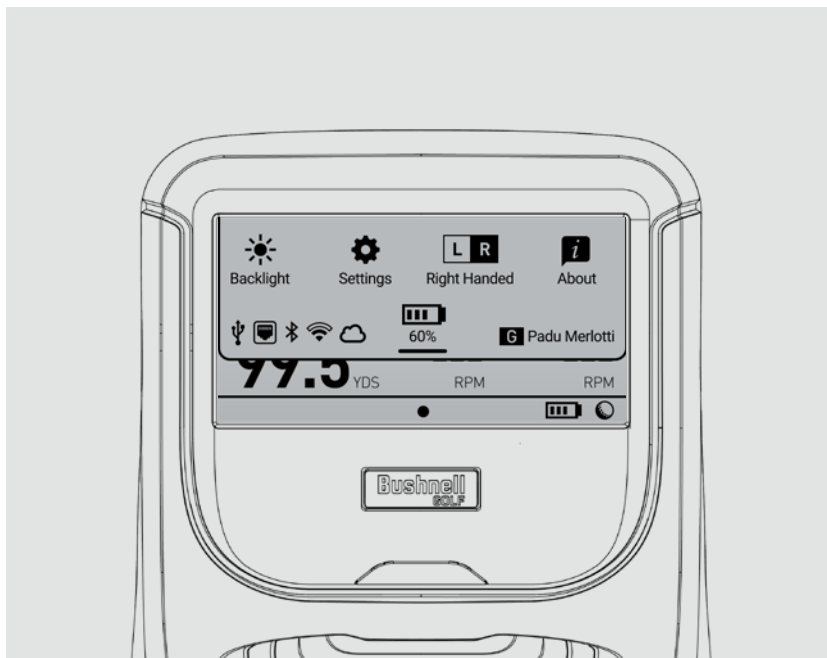
Quick Settings

NAVIGATING THE MENU SCREENS





On your Launch Pro touch display, swipe down to access the QUICK SETTINGS screen. On the QUICK SETTINGS screen, you can access the **BACKLIGHT**, **SETTINGS**, **LEFT/RIGHT-HANDED** modes, **ABOUT**, and you can check the battery life.



Quick Settings Explained

+ Backlight	Turn on/off the backlight
+ Settings	Turn on/off tracking mode, access target alignment, check firmware, choose units of measurement, access Wi-Fi, change the display, access diagnostics, access shot saver
+ Left/Right Handed	Toggle between left and right handed modes
+ About	Access account information, version, patents, system information, web dashboard, and counters
+ Battery	Check battery life

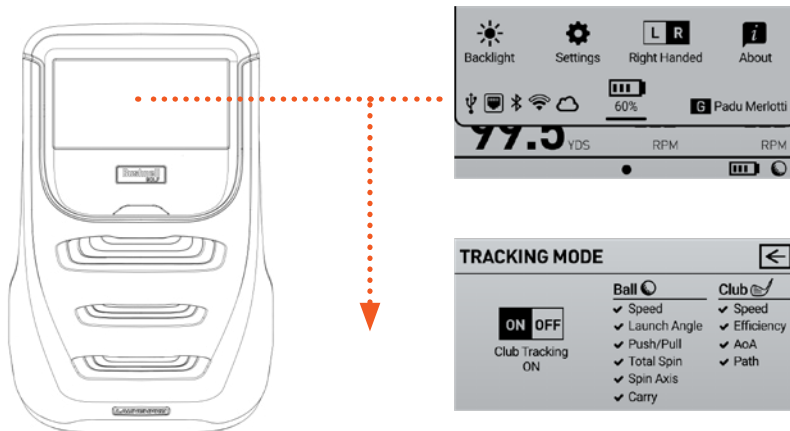


Club Tracking

TRACK YOUR CLUBFACE FOR MORE DATA

LAUNCH PRO USER MANUAL





To turn on Club Tracking mode, swipe down to access the QUICK SETTINGS screen, then go to SETTINGS, then TRACKING MODE. Once the ball is in the hitting zone, the Launch Pro will display the READY screen and the green LED indicator light will change from blinking to solid.

Applying a Club Marker

LEARN HOW TO APPLY A CLUB MARKER TO YOUR CLUB

Your Launch Pro doesn't only look at the ball, but the club too. To take advantage of this feature, open the club marker packet (included) and follow the directions to apply the club marker to your club.

1



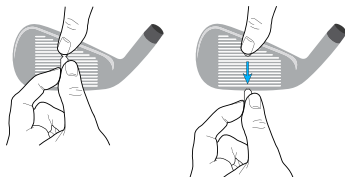
Clean the clubface with an alcohol pad or water

2



Place club marker at the location (above) on the clubface, adhesive side down

3



Firmly apply pressure to the club marker with your finger and gently pull the tab away, leaving only the club marker on the clubface

Club Data Explained

After your next swing, your Launch Pro will now display club speed, path in and path out, angle of attack, and efficiency.

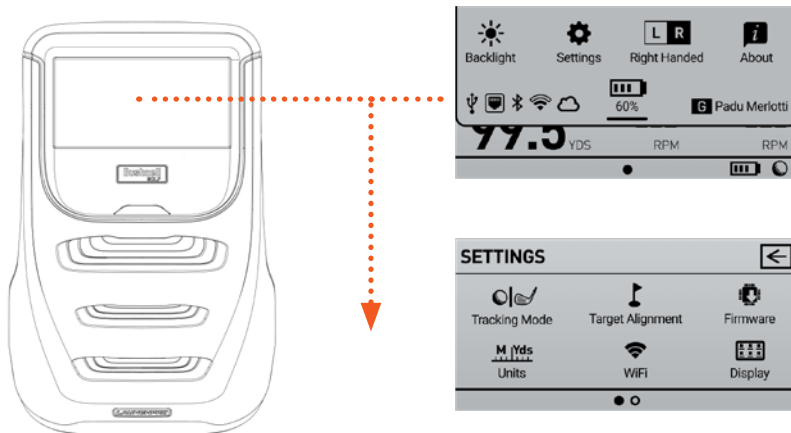
+ Club Speed	The speed the club is traveling just prior to impact. A higher speed means greater potential distance.
+ Path in/ Path out	The direction the club head is moving at impact. A "0" path is a straight shot. A negative path means the ball moves "out to in" and a positive path means the ball moves "in to out".
+ Angle of Attack	The vertical angle of the club head at impact. A positive number is hitting up on the ball and a negative number is hitting down on the ball.
+ Efficiency	Efficiency, also known as Smash Factor, is the ratio between club head and golf ball velocities.



Target Alignment

USING THE ALIGNMENT STICK



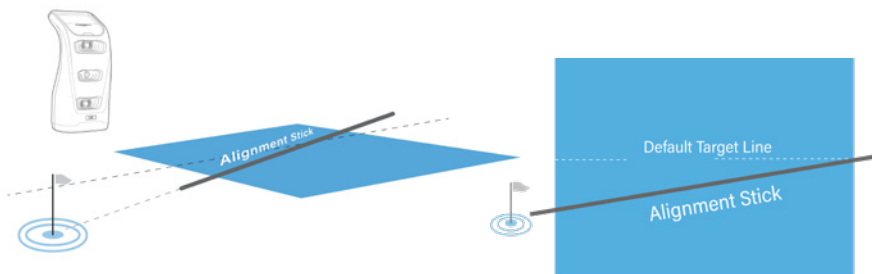


To activate target alignment, swipe down to access the QUICK SETTINGS screen. Select SETTINGS, then go to TARGET ALIGNMENT.

Target Alignment

USING THE ALIGNMENT STICK

Target alignment can be adjusted up to 10 degrees on the Launch Pro via the FSS Alignment Stick. To adjust alignment, place the FSS Alignment Stick in the Launch Pro hitting zone and align to your target. Once aligned, step away from the device to allow for calibration.



When calibration is complete, the new alignment angle will be shown on the touch display and the LED indicator light will turn solid orange. The new alignment angle will be shown on the touch display.



Alignment can be viewed and reset at any time. Swipe down to access the QUICK SETTINGS screen, then go to TARGET ALIGNMENT. Alignment is always reset when the unit is powered off.





Storage and Maintenance

CARING FOR YOUR LAUNCH PRO



How to store the Launch Pro

Prior to storing the Launch Pro, make sure the device is powered off. Store the Launch Pro in a cool, dry environment in its original foam-lined packaging or in a specially designed carrying case to prevent damage.

Cleaning the Launch Pro

To remove dirt, wipe the device with a damp cloth.

Safety

SAFETY TIPS FOR YOUR GC3



- + To charge your Launch Pro, use the power adapter that came with the device. Using any other power adapter or charger may cause damage to the device and may cause fire or injury.
- + DO NOT disassemble, change, or attempt to repair the Launch Pro. This could result in electric shock and will void the manufacturer's warranty.
- + DO NOT use the Launch Pro in environments where high humidity, smoke, or dust is present.
- + To avoid possible injury, DO NOT look directly into the Launch Pro when it is turned on.
- + If foreign objects or water enter the Launch Pro, disconnect the device from external power and turn the power off. Continued use in this state can cause fire or electric shock.
- + The Launch Pro has been designed to withstand ball impact. However, if the device enclosure or LCD display has been damaged due to a ball impact or for any other reason, turn power off and discontinue use.
- + The Launch Pro uses three digital cameras that are precisely calibrated. Do not drop or subject the device to any impacts.
- + After use, always store the Launch Pro in a safe, dry, and dust-free environment.

Specifications

+ Battery Life	5-7 Hours
+ Dimensions	6"L x 6.2"W x 12"H
+ Interfaces	USB-C / Ethernet / WiFi
+ Ball Data Collected	Ball Speed / Launch Angle / Horizontal Launch Angle / Total Spin
+ Club Data Collected	Club Speed / Smash Factor
+ Weight	5lbs (2.3kg)

Support

Questions?

We're here to help. For product-related issues or questions, go to

www.bushnellgolf.com/contact or call **800-423-3537**

Bushnell®
GOLF